

4x4 5x5 6x6 7x7



Sewing Machine
ZIPPER PURSE

Sewing Machine Zipper Purse 4x4 5x5 6x6 and 7x7 Instructions

FABRIC REQUIREMENTS

4x4 hoop (100mm x 100mm)

Fabric A – 8cm x 16cm (3"x 6") – Top section of zipper – top part of the sewing machine
Fabric B – 9cm x 16cm (3.5"x 6") – Bottom section of zipper – top part of the sewing machine
Fabric C – 5cm x 9cm (2"x 3.5") – Background behind the sewing machine
Fabric D – 5cm x 16cm (1.5"x 6") – Base of sewing machine
Fabric E – 4cm x 16cm (1"x 6") – Bottom side of sewing machine
Fabric F – 16cm x 16cm (6"x 6") – Back of purse
Fabric G – 5cm x 10cm (2"x 4") – Wrist strap/loop (can be made longer if you desire)
Small pieces of fabric for the applique – display panel and needle plate

Lining 1 – 13cm x 16cm (5"x 6") – Lining on zipper side
Lining 2 – 16cm x 16cm (6"x 6") – Back lining

Batting 1 – 8cm x 16cm (3"x 6") – Front batting
Batting 2 – 16cm x 16cm (6"x 6") – Back batting

- **Standard Nylon Zipper – 16cm (6") x 2.5cm (1") in width or larger**
- **D Ring/Key Ring or Lobster Clasp**

5x5 hoop (130mm x 130mm)

Fabric A – 10cm x 18cm (4"x 7") – Top section of zipper – top part of the sewing machine
Fabric B – 12cm x 18cm (4.5"x 7") – Bottom section of zipper – top part of the sewing machine
Fabric C – 6cm x 12cm (2.5"x 4.5") – Background behind the sewing machine
Fabric D – 5cm x 18cm (2"x 7") – Base of sewing machine
Fabric E – 4cm x 18cm (1"x 7") – Bottom side of sewing machine
Fabric F – 18cm x 18cm (7"x 7") – Back of purse
Fabric G – 5cm x 10cm (2"x 4") – Wrist strap/loop (can be made longer if you desire)
Small pieces of fabric for the applique – display panel and needle plate

Lining 1 – 13cm x 18cm (5"x 7") – Lining on zipper side
Lining 2 – 18cm x 18cm (7"x 7") – Back lining

Batting 1 – 10cm x 18cm (4"x 7") – Front batting
Batting 2 – 18cm x 18cm (7"x 7") – Back batting

- **Standard Nylon Zipper – 18cm (7") or longer x 2.5cm (1") in width or larger**
- **D Ring/Key Ring or Lobster Clasp**

6x6 hoop (160mm x 160mm)

Fabric A – 5cm x 20cm (4"x 8") – Top section of zipper – top part of the sewing machine
Fabric B – 14cm x 20cm (5.5"x 8") – Bottom section of zipper – top part of the sewing machine
Fabric C – 8cm x 14cm (3"x 5.5") – Background behind the sewing machine
Fabric D – 6cm x 20cm (2.5"x 8") – Base of sewing machine
Fabric E – 5cm x 20cm (2"x 8") – Bottom side of sewing machine
Fabric F – 20cm x 20cm (8"x 8") – Back of purse
Fabric G – 5cm x 10cm (2"x 4") – Wrist strap/loop (can be made longer if you desire)
Small pieces of fabric for the applique – display panel and needle plate

Lining 1 – 18cm x 20cm (7"x 8") – Lining on zipper side
Lining 2 – 20cm x 20cm (8"x 8") – Back lining

Batting 1 – 16cm x 20cm (6"x 8") – Front batting
Batting 2 – 20cm x 20cm (8"x 8") – Back batting

- **Standard Nylon Zipper – 20cm (8") or longer x 2.5cm (1") in width or larger**
- **D Ring/Key Ring or Lobster Clasp**

7x7 hoop (180mm x 180mm)

- Fabric A** – 10cm x 23cm (4"x 9") – Top section of zipper – top part of the sewing machine
Fabric B – 17cm x 23cm (6.5"x 9") – Bottom section of zipper – top part of the sewing machine
Fabric C – 9cm x 16cm (3.5"x 6") – Background behind the sewing machine
Fabric D – 8cm x 23cm (3"x 9") – Base of sewing machine
Fabric E – 5cm x 23cm (2"x 9") – Bottom side of sewing machine
Fabric F – 23cm x 23cm (9"x 9") – Back of purse
Fabric G – 5cm x 10cm (2"x 4") – Wrist strap/loop (can be made longer if you desire)
Small pieces of fabric for the applique – display panel and needle plate

- Lining 1** – 20cm x 23cm (8"x 9") – Lining on zipper side
Lining 2 – 23cm x 23cm (9"x 9") – Back lining

- Batting 1** – 20cm x 23cm (8"x 9") – Front batting
Batting 2 – 23cm x 23cm (9"x 9") – Back batting

- **Standard Nylon Zipper** – 23cm (9") or longer x 2.5cm (1") in width or larger
- **D Ring/Key Ring or Lobster Clasp**

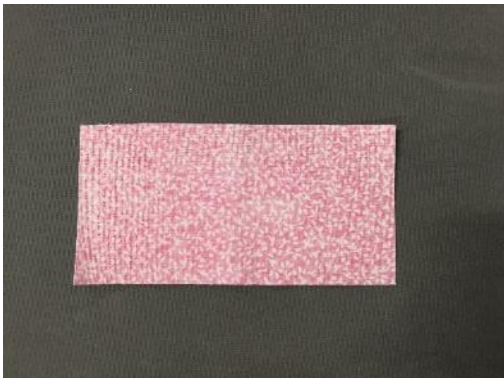
Finished Dimensions (approx.):

- 4x4** – 9cmW x 9cmL (3.5" x 3.5")
5x5 – 12cmW x 12cmL (4.75" x 4.75")
6x6 – 14.6cmW x 14.6cmL (5.75" x 5.75")
7x7 – 17cmW x 17cmL (6.75" x 6.75")

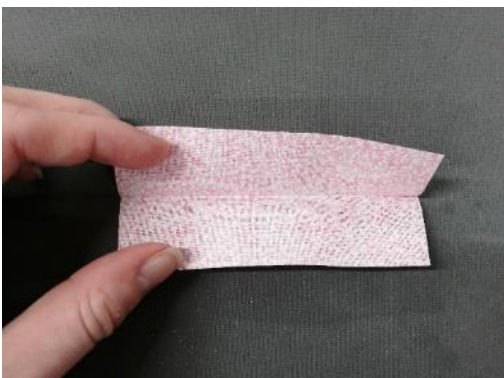
MAKE THE LOOP FOR A SPLIT RING (key ring) AND STRAP.

For this project, we used a piece of ribbon, but the following instructions will show you how to make one with fabric.

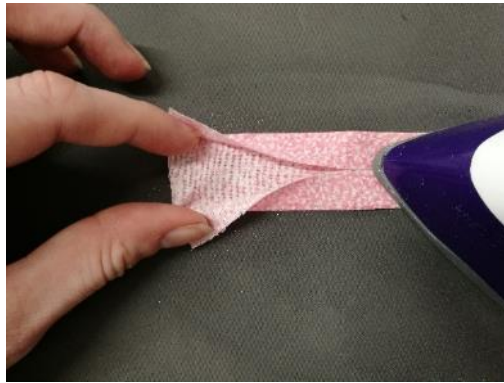
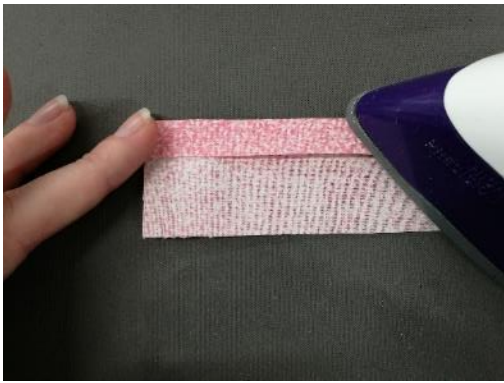
Take **Fabric G** and fold in half lengthwise **wrong sides** together. Iron the fold.



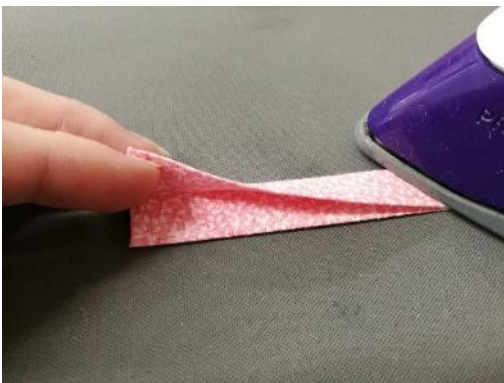
Unfold.



Fold both the edges into the middle crease and iron.



Fold again in half lengthways.



Sew the edges together, repeat for the other side if you would like it to look even. (Use the bobbin the same colour as your thread).



Fold your piece of fabric in half. Put through the split ring.



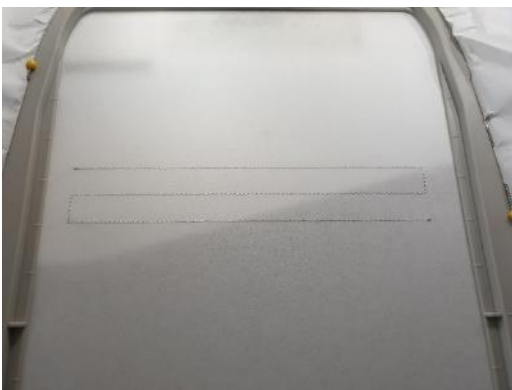
MAKING YOUR ZIPPER PURSE

Hoop soluble or tearaway stabiliser in the hoop.

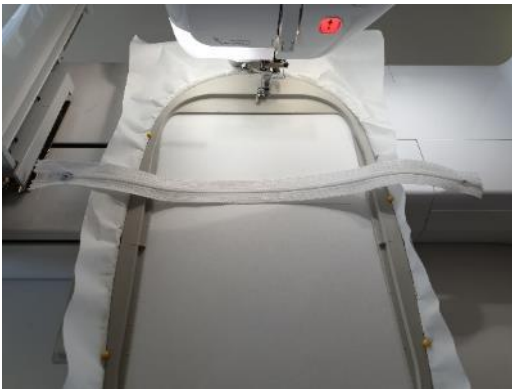
Load design onto your machine for the zipper purse. Use applique scissors for trimming the fabric.



STEP 1 Stitch the zipper placement line.



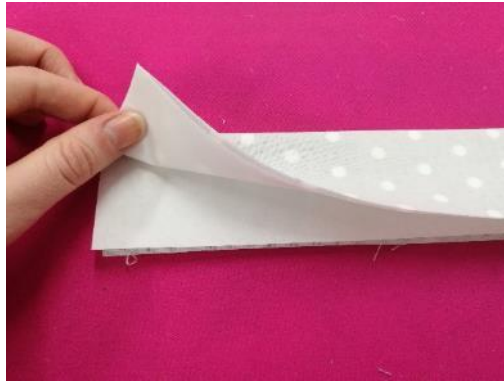
Place the zipper **right side** up centred on the placement line, with the pull hanging past the side of the hoop. The zipper will be too long, but this can be trimmed later when you trim the seam. Tape in place.



STEP 2 Stitch the zipper to the stabiliser. Remove the tape.



Fold **Fabric A** in half (**wrong sides** together) and iron flat. **OPTIONAL** – If you would like stabiliser in **Fabric A**, you can use a folded piece of tearaway stabiliser to give the upper zip flap some strength. Fold the stabiliser widthways and iron the fold. Slip inside **Fabric A**.



Place the folded edge of **Fabric A** meeting on the centre of the zipper and sticky tape in place.



STEP 3 Stitch the **Fabric A** down. Remove the tape.



Fold the top edge of **Fabric B** over 1 inch (**wrong sides** together). **OPTIONAL** – If you would like batting in **Fabric B**, you can use **Batting 1** at this time. Place **Batting 1** inside the fold of **Fabric B**. You'll notice that the batting will be much longer than the fabric.





Place the folded edge of **fabric B** meeting on the centre of the zipper and sticky tape in place.



STEP 4 Stitch the **Fabric B** down. Remove tape.



Remove the hoop from your machine and trim the fabric about 1–2mm from the stitching, leaving the excess in the seams.



STEP 5 Stitch the placement line for the background



STEP 6 Place **Fabric C** on top of the hoop right side up covering the placement line and stitch down.



Remove the hoop from your machine and trim the fabric about 1–2mm from the stitching, leaving the excess in the seams.



STEPS 7 & 8 Repeat the applique process for the base of the sewing machine using **Fabric D**.



STEP 9 Using the stitching line from **Fabric D** as a placement line, place **Fabric E** on top of the hoop wrong side up with $\frac{1}{4}$ of inch crossing over the placement line and the excess fabric pointing towards the top of the hoop. Stitch down.



STEP 10 Fold over and stitch down



STEPS 11 & 12 Repeat the applique process for the needle plate using a piece of fabric large enough to cover the placement line.



STEPS 13 & 14 Repeat the applique process with the display panel using a piece of fabric large enough to cover the placement line.



STEP 15 Embroider the operation buttons



STEP 16 Embroider the sections for the thread lever



STEP 17 Embroider the stitch selector buttons



STEP 18 Embroider the satin stitch around the display panel



STEP 19 Embroider the satin stitch around the stitch selection buttons



STEP 20 Embroider the satin stitch around the needle plate



STEP 21 Embroider the satin stitch and triple stitch around the base of the sewing machine



STEP 22 Embroider the presser foot screw



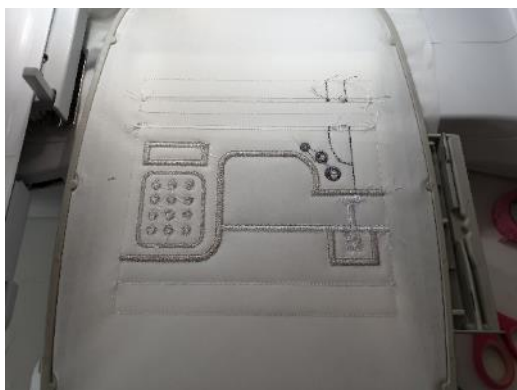
STEP 23 Embroider the presser foot



STEP 24 Embroider the satin stitch and triple stitch around the sewing machine



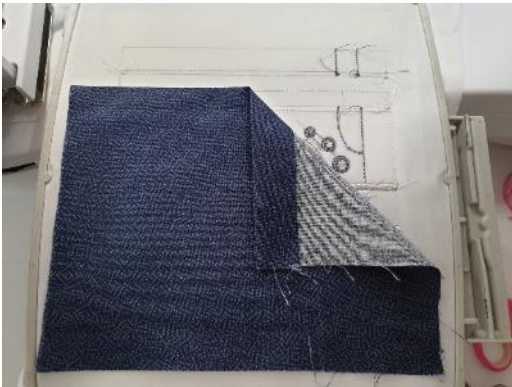
Leave your work in the hoop. Turn the hoop over so the **wrong side** is facing up.



Fold **Lining 1** over one inch (**wrong sides** together) on one of the short edges and iron flat



Place on top of the hoop **right side up** with the fold in line with the centre of the zipper which you can see through the stabiliser. Tape in place so it doesn't fall off when you turn the hoop back over.



Turn the hoop back over so the **right side** is facing up.

STEP 25 Stitch **Lining 1** to the back of the hoop.



STEP 26 Embroider the lace along the zipper. Use the same colour in the bobbin if you want.



Now make sure you have your zipper open!



Place your loop that you made earlier on top the hoop across the seam line. Have the fold (and 'D' Ring/Key Ring/Lobster Clasp if you used one) towards the middle of the hoop and the cut ends over the seam line as shown below. Tape in place.



Place **Fabric F** (back of the purse) **wrong side up** on the hoop and then place **Batting 2** on top of that.



As stated earlier make sure the zipper is open. Otherwise you won't be able to turn everything through the zipper later.

STEP 27 Stitch the seam.



Remove the hoop from the machine and turn over to the back and remove the tape from **Lining 1**.

Place **lining 2** on top of **lining 1** right sides together. Tape in place.



Turn the hoop over so the **right side** is up and return to the machine.

STEP 28 Stitch the seam with a triple stitch. This time it will stitch the **lining 2** onto the back and it will leave an opening for turning.



Remove your work from the hoop. Tear away excess stabiliser.



Trim your seams to $\frac{1}{4}$ inch and $\frac{1}{2}$ " for the opening. Clip the corners and along the curve. You can trim the batting out of the seams if you prefer.





Turn out through the opening in the seam. Use a chopstick to help push out the corners.



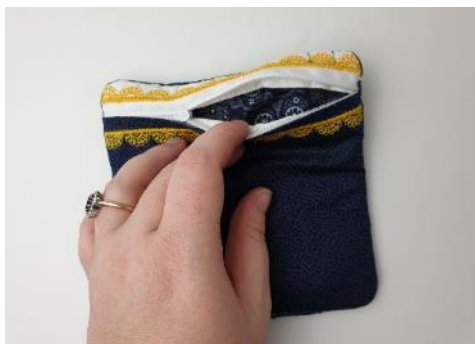
Hand stitch or glue your opening closed.



Tear away the top stabiliser from the back where the zipper is or washaway the stabilizer if you used soluble. Trim any loose threads.



You will then be able to get access to the opening where the zipper is unzipped. Turn the purse to the **right side** through the zip. Use a chopstick to help push out the corners.



Tear away any other stabiliser that can be seen or wash your purse to dissolve the soluble stabiliser and let dry.

Iron flat and press gently.



You have now finished your purse. Enjoy!

